

SWINDON TOWN



FOOTBALL CLUB

Official Programme

6d.

Mills & Merricks Ltd

For over 70 years we have been one of Swindon's leading house furnishers, offering a personal service. You cannot do better than to inspect our showrooms before making your final decision.

Also contractors to

County and Borough Councils

Hospitals

Government Departments

Factories

Schools etc.

Think about it after the game!

We are open until 6 p.m. each evening and 1 p.m. on Wednesdays.

Telephone 5365/6

16-17 BRIDGE STREET, SWINDON

SATURDAY, 26th SEPTEMBER, 1964

DIVISION TWO

SWINDON TOWN 4
v.
HUDDERSFIELD TN. ✓

Kick-off 3 p.m.

REFEREE:

Mr. J. LOWRY (Neath)

LINESMEN:

Red Flag—Mr. D. W. HALL (Manchester)

Yellow Flag—Mr. E. J. KNIGHT (Taunton)

**Wiltshire's most versatile
Printers**

THE BOROUGH PRESS

Eastcott Hill, Swindon

Telephone 4022

Maylott Studios

For GROUP & SPORT Photographs

•
Official Photographer to
Swindon Town Football Club
•

31 FARINGDON ROAD

TEL. 22792

Notton's Cafe

COUNTY ROAD

200 yards from Ground

•
RIGHT ON THE BALL

L. Wollen

OFF LICENCE

WINES and SPIRITS

Arkell's Ales and Stout

373 Cricklade Rd., Swindon

Deliveries Daily

Phone 3508

C. DUNN & SON

Builders & Decorators

Alterations, Renovations,
Conversions, Plumbers &
Sanitary Engineers

503 CRICKLADE RD. Tel. 22522

W. COLLINS (Swindon) LTD.

TURF ACCOUNTANTS

69 COMMERCIAL ROAD - SWINDON

TEL. 21333

SWINDON TOWN FOOTBALL COMPANY LIMITED

Registered Office: COUNTY GROUND, SWINDON

Directors:

Mr. W. J. CASTLE (Chairman)

Mr. H. E. LANE (Vice-Chairman)

Messrs. C. CHANDLER, J.P., J. DAVIES, R. FRICKER, C. J. GREEN, F. PLYER,
H. WILLIAMS and K. H. WILMER

Manager: B. J. HEAD

Secretary: R. A. MORSE

VOL. 15

SATURDAY, SEPTEMBER 26th, 1964

No. 5

CLUB NOTES

Much has happened since our last programme dated 12th September, 1964. On that day we unfortunately lost to Manchester City 0-1, and have lost two other games away from home—0-4 at Swansea, and 0-5 at Portsmouth.

Fortunes fluctuate quickly in football. Dame Fortune is very fickle, and at the present time Swindon seems to be one of the unfortunate clubs. Almost exactly a year ago, we travelled to Portsmouth and returned home victorious by 4 goals to 1. This year, with everything going against us, we were beaten by 5 goals. Such is football.

Comparison of records make interesting, if somewhat disappointing reading.

League results 28th September, 1963:

P.	W.	D.	L.	F.	A.	Pts.
9	7	2	0	18	8	16

League results 25th September, 1964:

P.	W.	D.	L.	F.	A.	Pts.
9	3	0	6	10	22	6

WILSONS (SWINDON) LTD.

BUILDERS OF MODERN ATTRACTIVE
HOUSES AND BUNGALOWS

Enquiries to:

HEAD OFFICE: 90 COMMERCIAL ROAD, SWINDON 6361

SITE OFFICE: COVENTRY FARM ESTATE, WROUGHTON 271

SITE OFFICE: COLEVIEW ESTATE, STRATTON S.M. 314

The Rendezvous of all Sportsmen -

THE CROWN INN

(Host: Frank Plyer)



Arkell's Best Ales :: Fully Licensed
Snacks, etc.



Stratton St. Margaret Tel. 2339

Always at your service

L. BIBBY

For all Types—Rags, Iron and Metal,
etc. Spot Cash Paid. Please Tel. 2101
and our van will call.

THE PADDOCK, ERMIN STREET
STRATTON ST. MARGARET

WISES CATERING SERVICE

(Reg. Wise)

Our Caterer for the past 16 seasons
Guarantees

A GOOD CUP OF TEA AT THE COUNTY GROUND

A full range of Sweets & Cigarettes
at any of our five kiosks on your
way in. ENJOY YOURSELF

For Best Quality Wet Fish

9 a.m. - 6 p.m. (except Mondays)

YORK ROAD FISHERIES

Frying Mid-day Tuesday, Wednesday,
Thursday, Friday and Saturday

PHONE 3680

MARSHGATE GARAGE

Motor Engineers :: Rootes Group Dealers
STRATTON ROAD - SWINDON - WILTS.

Tel. Swindon 22788

TWO MINUTES FROM GROUND

CLUB NOTES—continued

Continuing with the matter, Swindon team, Saturday, 21st September, 1963: Turner; Dawson, Trollope; Morgan, McPherson, Woodruff; Summerbee, Hunt, Smith, Smart, Rogers.

Swindon team, Saturday, 19th September, 1964: Hicks; Dawson, Trollope; Morgan, McPherson, Hallett; Summerbee, Hunt, Peapell, Smart, Rogers.

Just three different names. What then is the cause of the change in form and fortunes?

On 23rd September, 1963, one of the outstanding daily papers wrote the following:

“We were impressed by the way in which the team **enjoyed** playing **together.**”

The success of the team is largely due to the great spirit which has developed, not only because of the large number of local boys on the books, but because those who have come from other places are now imbued with the same spirit.

Well, that great spirit is **still** there, and despite defeats and disappointments, our lads still **enjoy** playing **together.**

The team is probably more upset than anyone. They feel these defeats, and are anxious for better results. These will surely come; the skill is still there, the will to win is there (sometimes they try too hard). All that is required is a couple of wins and the restoration of confidence; and, just remember, our boys are far from being over the top.

This afternoon we entertain Huddersfield Town, a club with a great tradition. Older supporters will remember how it was the outstanding team in the 1920's. Its record reads as

BRISTOL OMNIBUS CO. LTD.

REGENT CIRCUS, SWINDON

Tel. 22243

For all your travel requirements

- ★ **Express Coach Service**
- ★ **British and Continental Holidays**
- ★ **Air Travel bookings**
- ★ **Butlin's Camps and Hotels**
- ★ **Bus Services in the West**

LUXURY COACHES FOR PRIVATE HIRE

Suppliers to the Town —

Swindon Sports Centre

SUPPORTERS SCARVES - RATTLES - Etc.

23 COMMERCIAL ROAD

Tel. 4270

ESTABLISHED 1923

DOBELL SHEARMAN

& CO. LTD.

£10 TYPEWRITERS from £10

Also full selection new standard and portable typewriters

OFFICE EQUIPMENT

26 High Street & 33 Faringdon Road, Swindon.

Tel. 4961/2

CLUB NOTES—continued

follows:— 1922-23, 3rd in Division I; 1923-24, 1924-25, 1925-26, Champions of Division I; 1926-27, 1927-28, Runners-up in Division I. Huddersfield also won the F.A. Cup in 1922, and were finalists in 1920, 1928, 1930, 1938.

A wonderful achievement indeed: what would have happened had the European Cup Competition been in operation?

The club also produced one of the outstanding managers of the century, namely Sir Herbert Chapman (1922-5), who later built up a great Arsenal team.

Today its position is 21st in League Division II. All teams, great or small, have their periods of glory, and disappointments. To some of us it seems more “downs” than “ups”, but every club has its turn.

We only hope that our team will soon return to the form of last year, and our visitors Huddersfield climb back to those palmy days in the 'twenties.

Last season we lost both games: 23rd November 0-2 at Huddersfield, and 4th April 1-2 at Swindon. We therefore have a little to get back in the way of points.

The teams met in the F.A. Cup in Season 1912-13. Swindon won at Huddersfield by 2-1. That was the period of Swindon's greatest glory.

The football world continues with its shocks and sensations. Much is said and written about present happenings. A great deal is hearsay and speculation. Probably the real facts will never be known. Let us, however, go forward to produce clean, fast, productive football. While we want to win, try our utmost to achieve the desired result, our real aim must surely be entertainment for the spectators.

OUR VISITORS

HUDDERSFIELD TOWN A.F.C.

We are pleased to welcome the Directors, Officials and Players of Huddersfield Town Football Club to the County Ground for this afternoon's game.

Details of the players from whom today's team will be selected are as follows:—

RAY WOOD

Former Manchester United keeper who signed for Town in December, 1958. Ex-England international and has been Town's regular custodian for the past five seasons. Ray hails from Hebburn-on-Tyne and it was from Darlington that Manchester United obtained his services. Height 6ft. Weight 12st. 9lb.

DENNIS ATKINS

This Bradford-born defender joined Town as a junior player in 1954. Dennis has graduated through Town's junior teams but it is only this past three seasons that he has become Town's regular right back after previously trying his hand as a wing-half and inside forward. Height 5ft. 8in. Weight 11st.

JOHN BETTANY

Born at Laughton Common, near Rotherham, John has only recently been converted to wing-half. Formerly an inside-forward he joined Town in 1959 as an amateur. Since that time he has frequently played for the first team and at the end of last season made the right-half position his own. Height 5ft. 8½in. Weight 11st. 3lb.

JOHN CODDINGTON

This product of Mansfield junior football joined Town as an amateur in 1953. Turned professional in 1955 and a year later made his first team debut along with Ray Wilson. Has been Town's regular pivot for the past three seasons. Height 6ft. ½in. Weight 12st. 12lb.

PETER DINSDALE

Another graduate of Town's junior sides, Peter is Bradford-born and indeed still lives in that city. Made his first team debut as an outside-left, but this last three seasons has played his football from his original position of left-half. Joined Town in January, 1956. Height 5ft. 10in. Weight 12st. 13lb.

For Quality FLOWERS - FRUIT - VEGETABLES
FROZEN FOODS - PRE-PACKED FUELS

CLARKE'S of Old Swindon

Proprietors: A. G. G. and J. A. W. HUNT

64 DEVIZES ROAD - SWINDON

Phone 22337

ORDERS DELIVERED DAILY

SEA VIEW CAMP

Camp Road, Wyke Regis, Weymouth.

Tel. 3351

Site overlooks Chesil Beach - Ideal for Camping Parties

Also Moderns Caravans for Hire

THE PORK SHOP

(Swindon Bacon Curing Co. Ltd.)

Specialists in

BACON - PORK - COOKED HAM

50 FLEET STREET - SWINDON

TEL. 22122

Meet your friends for an enjoyable evening at

THE KINGSDOWN ARMS

(Host A. W. Vann)

FULLY LICENSED - ARKELL'S BEERS

SNACKS - Etc.

STRATTON ST. MARGARET

Tel. 3283

OUR VISITORS—continued

KEVIN McHALE

When this outside-right made his debut against Leyton Orient in August, 1956 he became the youngest player to play for Town, being sixteen years old at the time. Together with Denis Law he formed the youngest right-wing pair ever to play in the Football League. Born at Darfield, near Barnsley, Kevin weighs 11st. and stands 5ft. 7½in.

LEN WHITE

Former Rotherham United player who later moved to Newcastle, where he gained Cup-Winners medal against Manchester City in 1955. Len can play any position in the forward line, although his appearances with Town have mainly been in the number 8 shirt. Came to Town in exchange deal in February, 1962. Height 5ft. 8in. Weight 11st. 9lb.

DEREK STOKES

Joined Town from Bradford City in June, 1960. Has been Town's leading marksman for the past two seasons. Capped by England Under 23's last season and also made close season tour with the same team. Born at Normanton, Yorkshire. Height 5ft. 9in. Weight 11st. 10lb.

LES MASSIE

Aberdeen-born inside-forward who came to Town as a youngster and since then has established himself as a regular player since being demobbed six years ago. Can also play at wing-half if needed. Height 5ft. 9in. Weight 11st. 4lb.

CHRIS BALDERSTONE

Local born inside forward who also represents Yorkshire at cricket. Yet another product of Town's nursery teams who has been a frequent player in the first team for the last three seasons. Height 6ft. 11in. Weight 12st. 3lb.

MICHAEL O'GRADY

Leeds-born player who was capped last season for the first time and marked his debut against Ireland with two match winning goals. Regarded by many judges as one of the finest prospects in the game. Made his first team debut two years ago and has been the regular choice ever since. Height 5ft. 10½in. Weight 11st. 3lb.

KEVIN LEWIS

This utility player was signed from Liverpool in August, 1963. He was originally a Sheffield United player, and has played in practically all the forward positions. Has a hard shot, and is always dangerous near goal.

- ★ Cedarwood Sheds
- ★ Workshops and Greenhouses



Made locally by

H. R. SPACKMAN

SHRIVENHAM ROAD - SWINDON - WILTS.

Telephone Swindon 4458



W. J. CASTLE

Office and Bakery:
4 and 5 MARKET STREET

Branch:
57 BRIDGE STREET
SWINDON

Telephone 22017

Specialists —

BIRTHDAY CAKES - WEDDING CAKES
DAIRY CREAM - PASTRIES
BUNS - ROLLS - SPONGES

Do not let **CHILBAINS** spoil a good game



RELAPERNE

Price 2/6 from your CHEMIST

2/10 Post Paid from

BALLARD & CO. (CHEMISTS) LTD.

FARINGDON - BERKS

SPECTATORS ARE REQUESTED NOT TO CROSS THE PITCH

SEASON TICKETS

Season Tickets are still available for seats in the Stands.
Prices for First Team League games only are:

New Stand

Blocks A and E	£6	10	0
Blocks B and D	£7	10	0
Block C	£8	10	0

Old Stand

Blocks G and I	£6	0	0
Blocks Y and Z	£6	10	0
Block H	£7	10	0
Centre Box	£9	10	0

A ticket to cover Reserve Team matches is also available
price 10/-.

DIVISION II

Date	Opponents	Ground	Result
1964			
August 22	BURY	(A)	1-6
25	CRYSTAL PALACE	(H)	2-0
29	LEYTON ORIENT	(H)	1-0
September 2	CRYSTAL PALACE	(A)	1-3
5	CHARLTON ATHLETIC	(A)	2-3
8	SWANSEA TOWN	(H)	3-0
12	MANCHESTER CITY	(H)	0-1
15	SWANSEA TOWN	(A)	0-4
19	PORTSMOUTH	(A)	0-5
26	HUDDERSFIELD TOWN	(H)	
October 3	DERBY COUNTY	(H)	
10	COVENTRY CITY	(A)	
13	SOUTHAMPTON	(H)	
17	CARDIFF CITY	(H)	
24	PRESTON NORTH END	(A)	
31	IPSWICH TOWN	(H)	
November 7	PLYMOUTH ARGYLE	(A)	
14	(1) BOLTON WANDERERS	(H)	
21	MIDDLESBROUGH	(A)	
28	NEWCASTLE UNITED	(H)	
December 5	(2) NORTHAMPTON TOWN	(A)	
12	BURY	(H)	
19	LEYTON ORIENT	(A)	
26	NORWCH CITY	(H)	
28	NORWCH CITY	(A)	

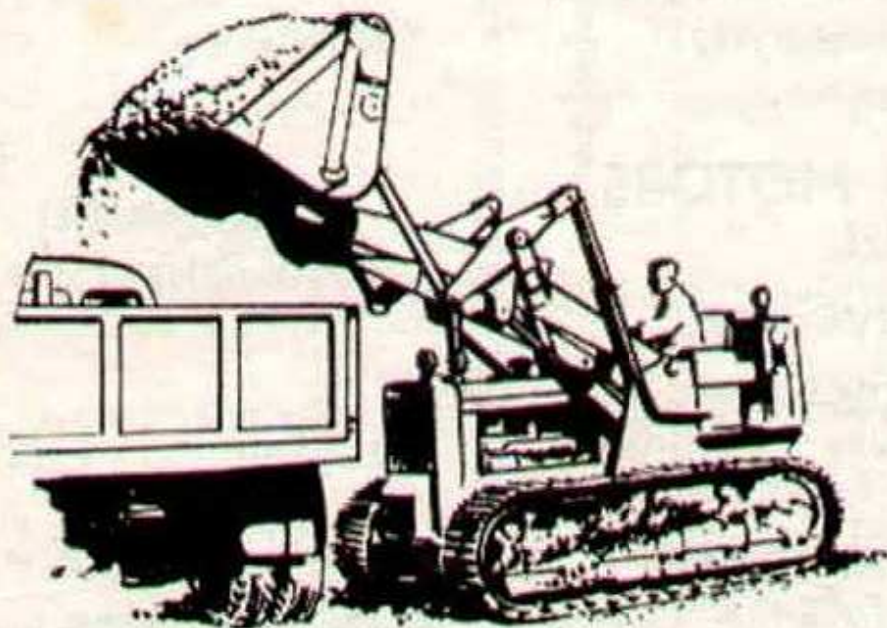
1965

January 2	CHARLTON ATHLETIC	(H)	
9	(3)		
16	MANCHESTER CITY	(A)	
23	PORTSMOUTH	(H)	
30	(4)		
February 6	HUDDERSFIELD TOWN	(A)	
13	DERBY COUNTY	(A)	
20	(5) COVENTRY CITY	(H)	
27	CARDIFF CITY	(A)	
March 6	(6) NORTHAMPTON TOWN	(H)	
13	IPSWICH TOWN	(A)	
20	PLYMOUTH ARGYLE	(H)	
26	(S.F.) BOLTON WANDERERS	(A)	
April 3	MIDDLESBROUGH	(H)	
10	NEWCASTLE UNITED	(A)	
16	ROTHERHAM UNITED	(H)	
17	PRESTON NORTH END	(H)	
19	ROTHERHAM UNITED	(A)	
24	SOUTHAMPTON	(A)	
May 1	(Final)		

H. HIBBERD LIMITED

40 NEWPORT STREET - SWINDON

PLANT HIRE CONTRACTORS



TRACTORS and SCRAPERS

BULLDOZERS

DROTT SHOVELS

DINKUM DIGGERS

MASSEY-FERGUSON DIGGERS

TELEPHONE: SWINDON 6125

Hatton's Newsagency

A. J. D. & N. J. Woodhouse

Newsagents :: Tobacconists
Confectioners

Agents for Wessex School of
Motoring

Booking Agents for Rimes Coaches

6 Regent Circus (near G.P.O.)

Telephone Swindon 22731

HULFORD MOTORS Ltd.

SELF DRIVE HIRE

Fleet of 1964 Fords
Anglias De-Luxe - Cortinas
De-Luxe - Zephyr 4s.

SHRIVENHAM ROAD

(200 yards from Football Ground)

Phone 4934

Large Car Park available

For High Class
Central Heating, Plumbing
Painting and Decorating
Electrical Installations
and Repairs

NORTH WILTS Sanitary & Heating Co. Ltd.

NEWPORT ST., SWINDON

Phone 5373/4

FLOODLIGHTING?

Warnes Installation

BATHURST CORNER, COUNTY RD.

Electrical Contractors to the

LET US QUOTE FOR YOUR ELECTRIC

RIGHT WING

SWINDON TOWN
Oakley

Dawson (2)

Tro

Morgan (4)

McPherson (5)

Leggett (7)

Hunt (8)

Summerbee (9)

Swindon Colours:

RED SHIRTS, WHITE SHORTS



Lewis

Stokes (11) Balderstone (10) Gilliver (12)

Dinsdale (6) Coddington (5)

McNAMARA
Meagan (3)

Par

Wood

LEFT WING

HUDDERSFIELD TOWN

MILLS & MERRI

For over 70 years we have been one of Swindon
offering a personal service. You cannot do
showrooms before making your final decision.
Also contractors to: County and Borough
Government Departments - Factories - Schools
Think about it after the game! We are open until
1 p.m. on Wednesdays.

16-17 BRIDGE STREET, SWINDON.

Installations Limited

COUNTY RD., SWINDON. Tel. 27291

Contractors to the "Town"

OUR ELECTRICAL CENTRAL HEATING

SWINDON TOWN

LEFT WING

Oakley

(2) Trollope (3)

McPherson (5)

Smart (6)

Summerbee (9) Skeen (10) Rogers (11)

**FOOTBALL
PINK**

These teams are subject
to alteration

(0) Gillivery (9) Massey (8) Lewis (7)

Coddington (5)

Holden (4)

(3) Parker (2)

Wood

WIDDERSFIELD TOWN

RIGHT WING

MERRICKS LTD.

en one of Swindon's leading house furnishers,
You cannot do better than to inspect our
our final decision.

ty and Borough Councils - Hospitals -
Factories - Schools, etc.

! We are open until 6 p.m. each evening and

SWINDON.

Tel. 5365/6

McILROYS

RESTAURANT

for morning coffee,
luncheon and
afternoon tea - in
pleasant surroundings -
you will find McIlroys
are top of the
'league'.

Full table service, best Beers
and Wines. Parties and
Functions catered for.

McIlroys Restaurant

64-72 Regent Street

Tel. 5294



THE ALCOHOL FUEL

COATE GARAGE

REPAIRS - OVERHAULS - WELDING
SERVICING - REBORING - TYRES

Props. E. V. & W. H. Mattick

Marlborough Rd., Swindon

SUPPORTERS' CLUB NOTES

We have been asked by Ernie Hunt to thank all supporters who contributed to his Benefit Collection, and to those who assisted in any way to produce such a gratifying result. We shall hope to give him an encore in 1969 or thereabouts.

All who have the welfare of the Club at heart must be concerned at the results recently. A goal average of 0-10, with no points in the last three League matches, is very disappointing, and we hope that the tide will turn today.

We do not agree with the writer to the local Press who said that Swindon crowds do not give sufficient vocal encouragement to the players. On the contrary, visiting supporters have remarked on numerous occasions that our local support is far above that on many grounds. Nevertheless, we hope that there will be a good volume of encouragement today, when, no doubt, the players will use every endeavour to return to winning form.

We would remind our members of the Dance to be held at Messrs. McIlroys Ltd. on 4th November from 8 p.m. to 1 a.m.

Tickets will cost four shillings if purchased previously. Admission at the door will be five shillings.

As previously announced, the elimination contest for the Swindon Football Queen will be held during this dance, and the necessary entry forms for this will be published soon in the local Press and in these programmes.

6d. **SWINDON ECHO** 6d.
FRIDAYS FRIDAYS

THE PAPER THAT FOLLOWS THE 'TOWN'

Regular Football Colour Pictures and Reports

Try us for
Clothes for all
the family on
all occasions

Little & Co. Ltd.
31-32 FLEET STREET
SWINDON
Tel. 22831

We have a
reputation for
Value & Service
that is second
to none

THE POPULAR MEN'S & LADIES' COMPLETE OUTFITTERS

SEE THE LOVELY SELECTION OF
CHOCOLATES AND SWEETS

Greetings Cards a Speciality

CECIL GREEN

CONFECTIONER AND TOBACCONIST

13 VICTORIA ROAD

Telephone 4416

The Advertisers in this programme have supported
the Club. Will you help us reciprocate by supporting
them whenever possible?

SUPPORTERS' CLUB NOTES—continued

Young ladies desiring to enter the contest will pay a fee of 2/6d. and will receive a ticket for the Dance.

Last year's event was very enjoyable and it is hoped that there will be a large number of entrants for the contest and a record attendance at the Dance.

Arrangements are being made for a late bus service.

We still hope to increase our sales of Competition tickets. Our sellers are able to dispose of numbers in excess of 10,000 in each week, but the legislation governing the competition permits sales of 15,000, and we should very much like to approach that figure.

Owing to railway reorganisation we were deprived of a number of sellers and customers, and we now appeal to supporters in other factories and places of employment to consider if they may be able to assist with the sales.

If so, will they please get in touch with our Competition Secretaries, Messrs. F. N. Deane and T. W. Stenning, at our Headquarters, before any match?

Membership enrolments are proceeding steadily, and we would remind supporters, who have not yet renewed their membership for the season, that there will be ample opportunities during October, as there will be four home matches in the month, following which, in accordance with normal arrangements, we shall notify the Directors of the Football Club of the number of members on our books.

F. J. ROPER
Devizes Rd.
Swindon
Phone 22341

F. J. ROPER
Cliftonian
38 William St.
Swindon
Phone 3785

Swindon's
Finest
FISH and CHIPS

**CALL ON
YOUR
WAY
HOME**

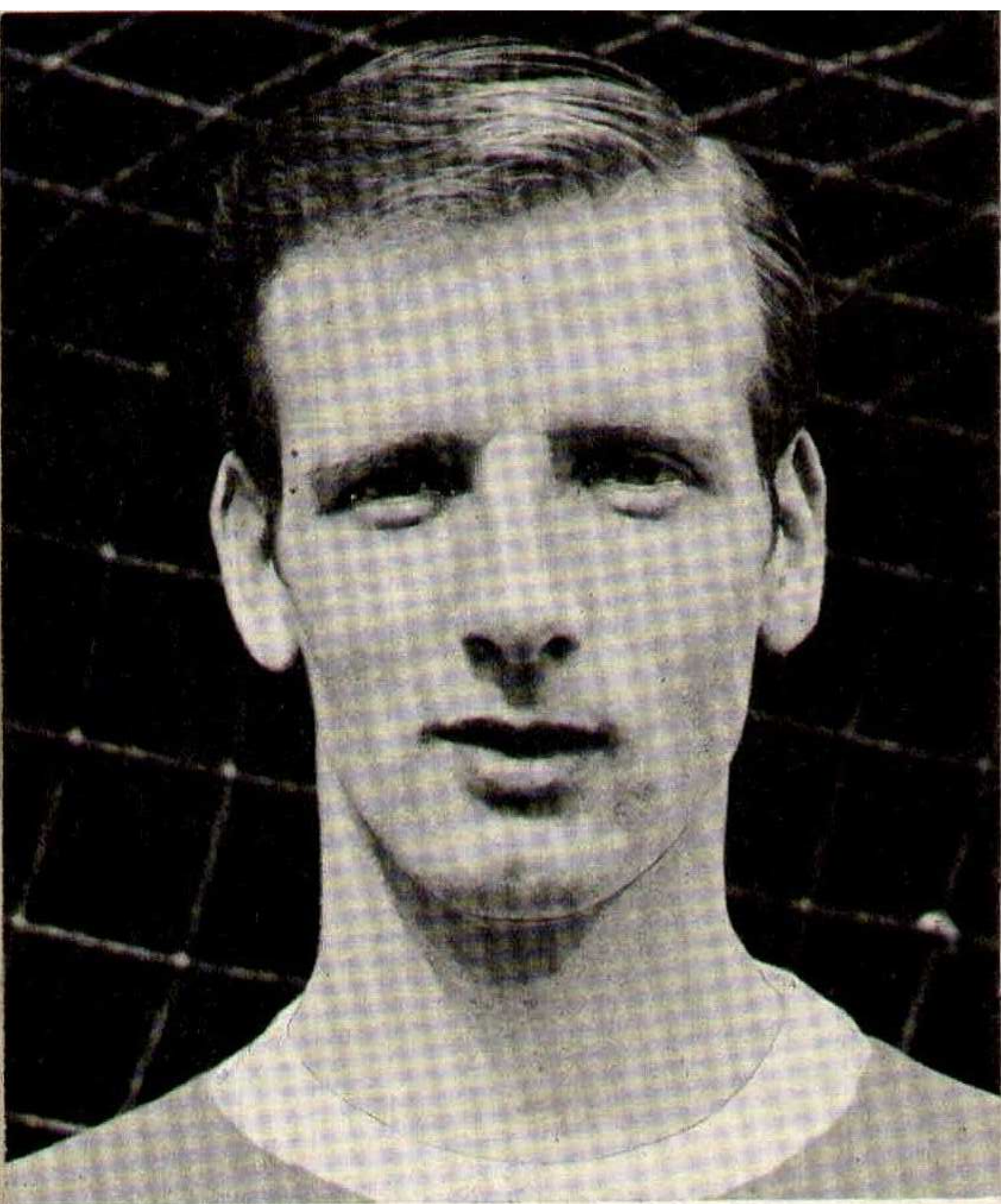
M e n u

**PLAICE
HAKE
COD
SKATE**

**WE SHALL BE
WAITING
TO
SERVE YOU**

F. J. ROPER
High St.
W'otton Bassett

F. J. ROPER
Cross Hayes
Malmesbury



BILL ATKINS

Eric

(E. Ayliffe)

GENTLEMEN'S HAIRDRESSER

57/59 Faringdon Road, Swindon.

Phone 4569

APPOINTMENTS MAY BE BOOKED IN PRIVATE SALON

not just concrete, but . . .

Premix



CLARK BROS. (Swindon) Ltd.

Building and Civil Engineering Contractors

CONSULT US FOR
BUILDING AND CIVIL ENGINEERING
CONSTRUCTION IN ALL ITS PHASES

STRATTON ROAD

SWINDON

Telephone

Swindon 27261

ADVANCE BOOKINGS

Tickets will be available for individual matches throughout the season. These will be on sale after one match for the following game. Tickets may be purchased at the Ticket Office at the rear of the Old Stand, or by postal application. Applications should be accompanied by a remittance and stamped addressed envelope.

Telephone applications can only be accepted when tickets can be paid for at least three hours before kick-off, i.e. 4.30 p.m. for a mid-week game and 12 noon for a Saturday match.

Ticket prices are as follows:

New Stand

Block E	6/6
Block D	7/6
Block C	8/6

Old Stand

Block F	7/6
Blocks G and I	6/- and 8/6
Block H	7/6 and 8/6
Blocks Y and Z	6/6 and 7/6

BRETTS

PET AND GARDEN SUPPLIES

32-33 Commercial Rd.
Swindon

6 Cromwell St.
Swindon

HOLMES & LUCAS

For a complete range of the very latest in radio,
television and all domestic appliances

Home demonstrations. Top Part Exchanges

HOLMES & LUCAS, 14 Regent Street Tel. 22526 & 4721

FOR ALL YOUR ANGLING NEEDS
CONSULT

FRANK WOODWARD

Swindon's Fishing Tackle Specialist

25 HAVELOCK ST., SWINDON
PHONE 3879

For Paints of Good Quality

H. S. HODGES & SONS (SWINDON) LTD.

CRICKLADE RD., SWINDON
PHONE 22422

Dulux, Brolac, Valspar, Wallcharm,
etc.

SOUTHERN LAUNDRY Co. Ltd.

Launderers and Dry Cleaners

HAYDON ST. - SWINDON
TELEPHONE 4161

COMLEY'S

Modern Music Centre

26 HAVELOCK ST., SWINDON

RECORDS - MUSIC - INSTRUMENTS

Top Twenty 'Pops' always in stock
and wide selection of Jazz & Classics

Personal Supervision Phone 3874

KEY OF THE BOARD

FIRST SECTION

- A—Arsenal v. Chelsea
- B—Blackburn R. v. Leicester City
- C—Blackpool v. Sunderland
- D—Fulham v. Stoke City
- E—Leeds United v. Notts Forest
- F—Liverpool v. Aston Villa
- G—Manchester United v. Tottenham H.
- H—Sheffield W. v. Wolverhampton W.
- I—West Bromwich A. v. Burnley
- J—West Ham United v. Sheffield Utd.
- K—Bolton Wanderers v. Plymouth A.
- L—Crystal Palace v. Bury
- M—Derby County v. Portsmouth
- N—Middlesbrough v. Ipswich Town
- O—Newcastle Utd. v. Preston N.E.
- P—Northampton Town v. Cardiff City
- Q—Norwich City v. Leyton Orient
- R—Rotherham Utd. v. Charlton Athletic
- S—Southampton v. Coventry City
- T—Bristol City v. Gillingham

SECOND SECTION

- A—Carlisle Utd. v. Bournemouth & B.A.
- B—Colchester Utd. v. Oldham Ath.
- C—Luton Town v. Peterborough Utd.
- D—Mansfield Town v. Grimsby Town
- E—Reading v. Watford
- F—Southend Utd. v. Walsall
- G—Bradford City v. Oxford Utd.
- H—Crewe Alexandra v. Bradford
- I—Darlington v. Southport
- J—Halifax Town v. Doncaster Rovers
- K—Notts County v. Chesterfield
- L—Rochdale v. Hartlepoons Utd.
- M—Torquay Utd. v. Lincoln City

EDWIN H. BRADLEY & SONS LTD. OKUS - SWINDON



HOUSING ESTATES UNDER
DEVELOPMENT IN
SWINDON, SHRIVENHAM,
CHIPPENHAM & TROWBRIDGE



Full particulars from our Estate Office:

74 VICTORIA ROAD - SWINDON

Telephone No. 5865

FORTHCOMING MATCHES

SATURDAY, OCTOBER 3rd, 1964

DIVISION II

Derby County

Kick-off 3 p.m.

SATURDAY, OCTOBER 10th, 1964

FOOTBALL COMBINATION

Southampton

Kick-off 3 p.m.

TUESDAY, OCTOBER 13th, 1964

DIVISION II

Southampton

Kick-off 7.30 p.m.

T. QUALITY (Swindon) LTD.

Wholesale Fish, Fruit, Vegetable and Potato Merchant

HOLBROOK STREET - SWINDON

Telephone Swindon 5446/7

G. A. STREETLY

Tobacconist and Confectioner

10 BOURNE ROAD - MOREDON - SWINDON

Telephone: 4956

"COAL!"
"COAL!"
"COAL!"

J. WILMER

St. Margaret's Road
Swindon

TELEPHONE 22535

LEESE, ING & CO. LTD.

Mineral Water and Squash Manufacturers

LANDS DOWN ROAD - SWINDON

TELEPHONE 22744

Have you purchased your ticket for the

DEVELOPMENT FUND COMPETITION?

TICKETS 1/- each

Draw at half-time today for

£100

Other Prizes Monday to Friday

£20 EACH DAY

Results published daily in —

"Daily Sketch"

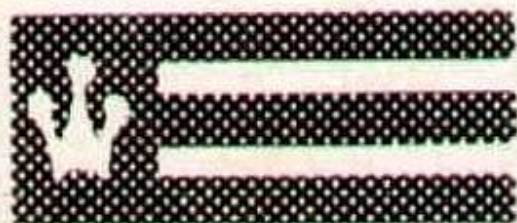
"Evening Advertiser" and

"Bristol Evening Post"

Competition Agents required —

Apply: Maurice Owen, County Ground, Swindon

Suppliers to the Swindon Team and
Manager (Mr. Head) of FORD CARS
MAY WE SUPPLY YOU?



EARLE

of Chippenham Limited

MAIN



DEALERS

COCKLEBURY ROAD - CHIPPENHAM

Telephone 3255

always on the ball

THE MIDLAND-WEST LANDSCAPE CO LTD

(formerly E. A. Roberts)

WESTBURY, BRACKLEY, NORTHANTS. Finner 392

16 HIGH STREET, BRACKLEY. 3324

88 HIGH STREET, PURTON. 544

Agency:

JOHNSONS FRUIT SHOP, 30 HIGH STREET, WINCANTON 3383

- Complete Design and Landscape: Hotels, Factories, Bowling Green, and all Playing Fields maintained.
- Plants, Roses, Shrubs, Trees, Peat, supplied in season.
- Good quality turf always available.
- Fencing of all kinds supplied and erected.
- Cotswold stone walls, Coloured Paving and Terraces our speciality.
- Contractors to County Councils.
- All work guaranteed
- ESTIMATES FREE

**BRITAIN'S FASTEST GROWING
TRADE UNION**



ASSET

(Association of Supervisory Staffs, Executives & Technicians)

**Specialises exclusively in the problems of
Supervisors, Executives and Technicians**

Full particulars:

INDUSTRIAL OFFICER, 24 BRUNSWICK SQUARE, GLOUCESTER

Telephone: Gloucester 27633

Gates from £3

Singles and Doubles

If you live in the Swindon area
we will measure your gateway
for you

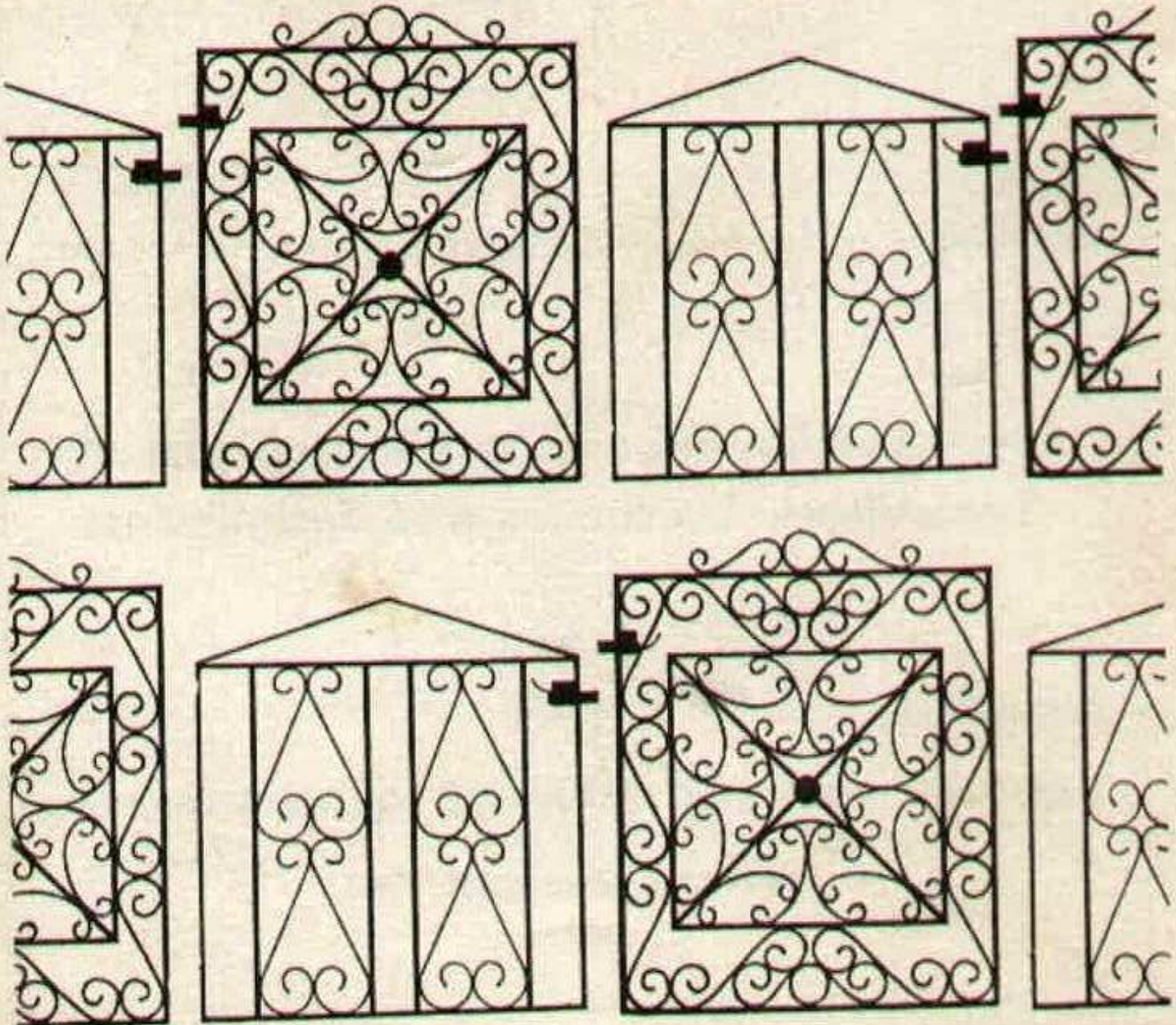
**Manufacturers of tip-up stadium
seating**

Send for free catalogue

MARTYN LYNshaw LIMITED

20 Boundary Works

Stratton Road SWINDON 4177



THE BOROUGH PRESS (SWINDON) LTD.